



Respect, Responsibility, Hope, Courage

# Brabourne

CofE Primary School

Friday 16th June

## Welcome to Term 6

I hope you all had a very good half term. It is a busy and fun-packed final term of the year, with many events to look forward to: International Week, Sky Arts week, Year 6 residential, Y4 and 5 reward evening, Y6 Bikeability, Y6 play, Leavers' service and prize giving, new YR taster days and picnic, Sports Day, Summer Fair, Year R,1,2, picnic, Mars' trip to Wildwood and so much more!

It is hard to believe our wonderful YRs have nearly finished their first year of school! We look forward to welcoming our new Brabourne pupils shortly, with taster afternoons and a Teddy Bears' picnic on the field. We can't wait to meet them all and welcome new families to our school.

## Healthy Snacks

Just a reminder that children may have a snack at playtime (YR,1 and 2 are provided with fruit and veg) but these should be healthy options.

## Chickens!

You may have seen the new fencing as you enter the main school drive. This is thanks to the amazing volunteers from the Ground Force team - how can we thank them enough for their amazing work this year - and the generosity of local companies such as Jackson's Fencing.

Our new chickens (all rescued from battery farms) will be arriving shortly to their new home, where they will be looked after by pupils. It was important to the Eco team to purposely choose rescue hens, to highlight the plight of our new feathered friends. They are looking a little bedraggled and featherless in places, but with some TLC from the children, we know they will look much healthier in their new home in no time!

## EYFS/KS1 Picnic date

Venus and Mars Class will be having a special end of year 'Picnic in the Park' on the school field. This will take place on **Wednesday 12th July from 2pm.**

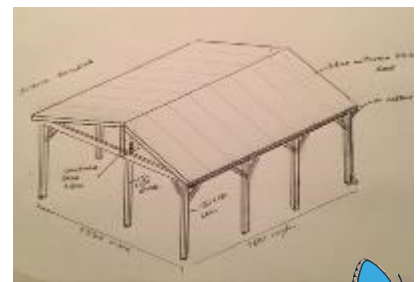
Families are most welcome to join with a picnic, or, if unable to attend, please send in your child/ren with an additional packed lunch.

## Miss Hume

Mars Class pupils have enjoyed being taught by Miss Hume, who will be finishing her placement at Brabourne on the 28th June. As with all the student teachers that we are able to support in placement, we wish her all the very best in her first job in September and the start of a successful career in teaching.

## Shelter

We are delighted to announce, that thanks to the tremendous hard work of the PTA, and the generosity of our amazing school community, we are able to go ahead with our brand new shelter/outdoor classroom over Venus and Mars Class. This will provide all year round accessibility and allow children to fully exploit the benefits of continuous provision in the Infants. Construction will begin in the summer holidays.



## Pupil prayer of the week:

Dear Lord

Let kindness spread from person to person and make the world full of joy and peace.

Amen

### Biathlon

Congratulations to Evelyn for finishing a fantastic **second** in the biathlon that took place at Ashford Prep School last term. Well done to Evelyn and all the children who took part! A special mention also to Jessica and Jasper, who came 4th and 6th in their heats! We are very proud of you all!



### Hockey

A massive well done to the Brabourne team who came **second** in the Ashford hockey tournament this week! A huge thank you to Ms Massie for her expert coaching throughout the year!



### Sports events

More enrichment this term for Neptune and Jupiter who enjoyed boxing sessions with an expert coach!



### Cricket

Brabourne pupils from Neptune Class had a brilliant afternoon of cricket at Ashford Prep School last week. They showed great potential for next year and, as always, super sportsmanship!

May we remind you that places must be booked and paid for in advance for both Early Morning Club and Wrap Around. **To ensure we always have appropriate staffing levels, we cannot accept bookings on the day.** Please ensure you have booked correctly and that your child's place is confirmed as it is most important that we have accurate numbers each day. Details can be found here: [Wrap around care - Brabourne Church of England Primary School](#). Please book in advance on [School Money](#).

**COLLECTION FROM WRAP AROUND: Would you kindly collect your child(ren):**

**Please collect your children promptly at the end of the session. Late pick ups may be charged.**

Website: [www.brabourne.kent.sch.uk](http://www.brabourne.kent.sch.uk)

Twitter: [@brabournecep](https://twitter.com/brabournecep)

Instagram: [@brabourne\\_cep\\_school](https://www.instagram.com/brabourne_cep_school)



## Transition week

Over the course of this term, our YR, Y2, Y4 pupils will be getting ready to move up to their next classes/secondary school. In addition to consolidating key knowledge and skills, to prepare them for their next step, they will be enjoying a 'Moving Up' day to meet their new teachers and new classmates. Year 6s will enjoy their transition week at secondary school and we hope they enjoy a taster of their new schools.

## Workshops

Thank you to parents/carers who attended our workshops on Reading and the Kent Test this term. Links to resources from the meetings can be found below:

[Kent test presentation](#)

[Reading presentation](#)

[Reading handout](#)

## Plans

Please find below this term's curriculum plans with details what the pupils are learning in class:

[Venus](#)

[Mars](#)

[Neptune](#)

[Jupiter](#)



**Kent  
Association  
for the  
Blind**

Thank you to the children for their super effort in the Fun Run and to all those who donated. We raised an amazing **£103.20!**

With best wishes,  
Andrew Stapley  
Headteacher

## Dates for your diary:

<b>Tuesday, 20th June 5.00 pm</b>	Y6 Residential parent/carer briefing
<b>Friday, 23rd June 3.15 pm -9.00 pm</b>	PTA -Non-uniform day Y4 + 5 Reward evening on field
<b>Wednesday 28th June</b>	Last swimming session for Neptune and Jupiter
<b>Monday, 3rd July</b>	Year 6 to wear Leavers' hoodies
<b>Monday 3rd / Tuesday 4th July</b>	Year 6 Bikeability
<b>Friday, 7th July pm from 1.30 pm</b>	Sports Day followed by Summer Fair
<b>Monday 10th - Wednesday 12th July</b>	Year 6 Kingswood Residential
<b>Wednesday 12th July 2.00 pm</b>	Venus and Mars 'Picnic in the Park' on school field
<b>Thursday, 20th July 9.15 am</b>	Year 6 performance dress rehearsal
<b>Thursday, 20th July, 6.30 pm</b>	Year 6 performance and Prize Giving
<b>Friday, 21st July, 9.00 am</b>	Leavers' service at Brabourne Church

## COST OF A SCHOOL LUNCH FROM SEPTEMBER 2023

We have been informed that the cost for a school lunch will be **£2.70** from September 2023.

### CATERLINK SURVEY

This term Caterlink are inviting parents/carers to complete a survey on the meal provision they provide. The survey will close on 21<sup>st</sup> July, and feedback will be sent to schools in the autumn term. Please click on the link below if you would like to complete the survey:

<https://www.surveymonkey.co.uk/r/M67CD59>

Year 5 parents and carers, please find a link from Simon Langton, with details of their Y5 upcoming tours.

[Year 5 Tour Mornings - Simon Langton Girls' Grammar School](#)

## Beavers, Cubs,

## Smeeth & Brabourne Schools



### Summer Play Park Challenge



Brabourne and Smeeth Playing Field  
Church Road, Smeeth  
TN25 6SA

The Playing Fields Association (PFA) needs your help!

The PFA are working very hard with other local community groups and the Parish Councils to secure funding to replace the playpark, which is coming to the end of its life.

**We need your ideas as the playground most important users!**

Over the summer holidays we need you to collect ideas and photographs of your TOP THREE favourite play parks and TOP THREE favoured play equipment.

Please email your photos and ideas by 9<sup>th</sup> September to:

**sara.daly@hotmail.co.uk**



# Class News



Venus class recreated the famous artwork "The Great Wave" by Katsushika Hokusai by making 3D wave scenes from card and paper.



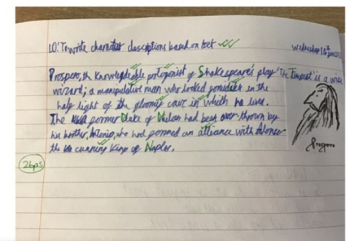
Mars Class had a wonderful trip this week to Wildwood where they learnt all about habitats and food chains. They got to visit the animals and even walk over the bear bridge!



Neptune class have been running a science experiment: what do plants need to grow well?



This week, Jupiter have been reading an abridged version of William Shakespeare's 'The Tempest'. We wrote descriptions of Prospero, the play's protagonist. We also created paintings of The Tempest on the style of JMW Turner, using our fingers to paint the storm Prospero conjured up.



Children may wear non-school uniform for the next three Fridays, in exchange for the following donations:

## Summer Fair Prep Dates for the Diary

- **FRI, 23 JUNE: DONATE A JAZZY JAR**
- **FRI, 30 JUNE: DONATE A CHOCOLATE ITEM**
- **FRI, 7 JULY: DONATE A BOTTLE FOR THE BOTTLE TOMBOLA**

Thank you for your support!

## PTA AFTER-SCHOOL ICE CREAM SALES

**FRIDAY, 9TH JUNE 2023**

**FRIDAY, 16TH JUNE 2023**

**FRIDAY, 14TH JULY 2023**

**FRIDAY, 21ST JULY 2023**

**PLEASE  
BRING SOME  
CHANGE**

ALL PROCEEDS WILL SUPPORT  
THE SCHOOL. THANK YOU FOR  
YOUR SUPPORT

IF THE WEATHER ISN'T QUITE RIGHT FOR ICE CREAMS AND WE NEED TO CHANGE THE ABOVE DATES, WE WILL INFORM PARENTS ASAP

A weekend of  
**Art, Crafts and Flowers**  
at Brabourne Church

**Saturday 17th 10am-4pm**  
and  
**Sunday 18th June 10:30am-4pm**

Come and enjoy the work of local artists, the produce of local crafters and the skill of local flower arrangers

Relax over refreshments with friends.  
Delicious scones with cream and jam, tea and coffee  
£3 per person

Raffle with excellent prizes

**All proceeds to Brabourne Church**

Cash sales only. Apologies, no signal for cash machines in the church.

