

Brabourne CE Primary School

Child Protection Policy – April 2020

Based on DfE and KCC guideline documents updated September 2019

This policy has been prepared with the Christian Value of responsibility foremost – this is a core value of the school and all members of the school community aspire to live by it daily. The Governing Body and staff are responsible for ensuring the safety of all who spend time in the school.

Key contact personnel in School

Designated Safeguarding Lead: Andrew Stapley

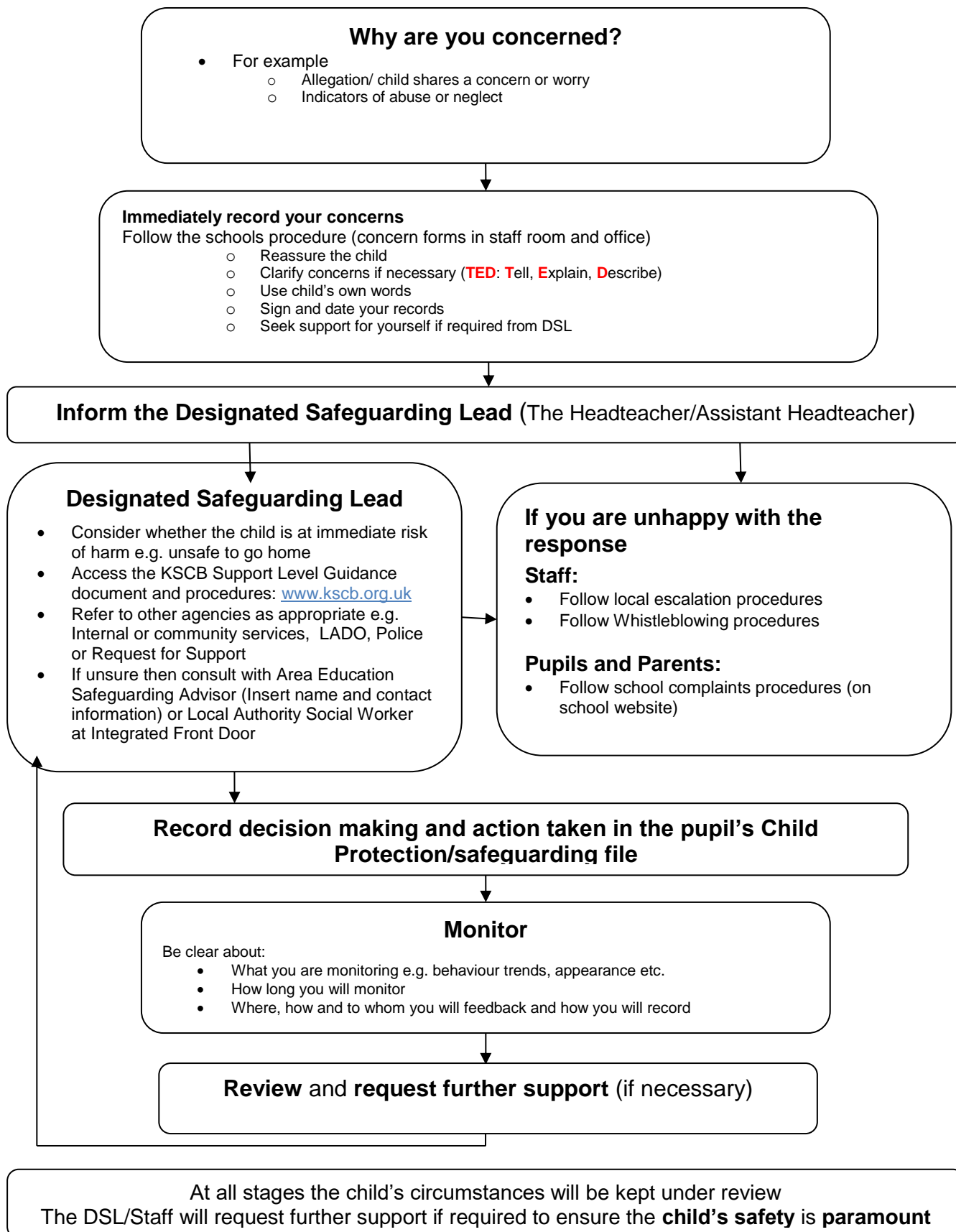
Named Safeguarding Governor: Sarah Hopker

Contents

	Page no
What to do if you have a welfare concern - flowchart	4
1. Introduction and Ethos	5
2. Definition of Safeguarding	5
3. Context	5
4. Related Safeguarding Policies	6
5. Key Responsibilities	7
6. Recognition and Types of Abuse and Neglect	8
7. Safeguarding and Child Protection Procedures	9
8. Record Keeping	10
9. Multi-Agency Working	11
10. Confidentiality and Information Sharing	11
11. Complaints	11
12. Staff induction, Awareness and Training	11
13. Safe Working Practice	12
14. Staff Supervision and Support	12
15. Safer Recruitment	13
16. Allegations Against Members of Staff and Volunteers	13
17. Safeguarding Children with Special Educational Needs and Disabilities	14
18. Peer on Peer Abuse	14
19. Gangs, Country Lines, Violent Crime and Exploitation	14
20. Online Safety	15
21. Curriculum and Staying Safe	15
22. The Use of School Premises by Other Organisations	16
23. Security	16
24. Monitoring and Review	16

25. Local Support	16
26. National Support	17

What to do if you have a welfare concern in Brabourne CEP School



1. Introduction and Ethos

- Brabourne CEP School is a community and all those directly connected (staff, volunteers, governors, parents, families and pupils) have an essential role to play in making it safe and secure. Brabourne CEP School recognise our statutory responsibility to safeguard and promote the welfare of all children.
- Brabourne CEP School recognises the importance of providing an ethos and environment within school that will help children to be safe and feel safe. In our school children are respected and encouraged to talk openly.
- Our school core safeguarding principles are:
 - We are an important part of the wider safeguarding system for children.
 - It is our whole school responsibility to safeguard and promote the welfare of children.
 - All children (defined as those up to the age of 18) regardless of age, gender, ability, culture, race, language, religion or sexual identity, have equal rights to protection.
 - All children have a right to be heard and to have their wishes and feelings taken into account.
 - All our staff understand safe professional practice and adhere to our safeguarding policies.

2. Definition of Safeguarding

- “Safeguarding is not just about protecting children, learners and vulnerable adults from deliberate harm, neglect and failure to act. It relates to broader aspects of care and education.” (Inspecting safeguarding in early years, education and skills settings, Ofsted, September 2018).
- All safeguarding policies will be reviewed on an annual (minimum) basis by the Governing Body which has responsibility for oversight of school safeguarding and child protection systems. The Designated Safeguarding Lead / Head Teacher will ensure regular reporting on safeguarding activity and systems in school to the Governing Body. The Governing Body will not receive details of individual pupil situations or identifying features of families as part of their oversight responsibility.
- There are four main elements to our child protection policy
 - **Prevention** (e.g. positive, supportive, safe school culture, curriculum and pastoral opportunities for children, safer recruitment procedures);
 - **Protection** (by following the agreed procedures, ensuring all staff are trained and supported to respond appropriately and sensitively to safeguarding concerns);
 - **Support** (for all pupils, parents and staff, and where appropriate specific intervention for those who may be at risk of harm);
 - **Working with parents and other agencies** (to ensure appropriate communications and actions are undertaken).
- The procedures contained in this policy apply to all staff (including temporary staff and volunteers) and governors and are consistent with those of Kent Safeguarding Children Board (KSCB).

3. Context

- This policy has been developed in accordance with the principles established by the Children Acts 1989 and 2004 and related guidance. This includes:
 - DfE guidance Keeping Children Safe in Education 2019 (KCSIE)
 - Working Together to Safeguard Children 2018 (WTSC)
 - Ofsted: Education Inspection Framework (2019)
 - Framework for the Assessment of Children in Need and their Families (2000)
 - Kent and Medway Safeguarding Children Procedures (Online)
 - Early Years and Foundation Stage Framework 2017 (EYFS)
- Section 175 of the Education Act 2002 requires school governing bodies, local education authorities and further education institutions to make arrangements to safeguard and promote the welfare of all children who are pupils at a school, or who are students under 18 years of age. Such arrangements will have to have regard to any guidance issued by the Secretary of State.
- The school acknowledges that this policy recognises a range of specific safeguarding issues including (but not limited to):
 - Bullying (including cyberbullying)
 - Children and the court system
 - Children Missing Education (CME)
 - Children with family members in prison
 - Child missing from home or care
 - Child Sexual Exploitation (CSE)
 - Child criminal exploitation (County Lines)
 - Domestic Abuse
 - Drugs and alcohol misuse
 - Fabricated or induced illness
 - Faith abuse
 - Female Genital Mutilation (FGM)
 - Forced marriage
 - Gangs and youth violence
 - Gender based abuse and violence against women and girls
 - Hate
 - Homelessness
 - Honour based abuse
 - Human trafficking and modern slavery
 - Mental health
 - Missing children and adults
 - Online safety
 - Peer on Peer Abuse
 - Prevent duty (radicalisation and extremism)
 - Private fostering
 - Relationship abuse
 - Sexual violence and sexual harassment between children
 - Upskirting
 - Youth produced sexual imagery or “Sexting”

(Also see Annex A within ‘Keeping children safe in education’ 2019)

4. Related Safeguarding Policies

- This policy is one of a series in the school's integrated safeguarding portfolio and should be read in conjunction with the policies as listed below:
 - Behaviour Management, linked to the Use of Physical Intervention
 - Searching, screening and confiscation
 - Online Safety and Social Media
 - Anti-Bullying
 - Data Protection and Information Sharing
 - Image Use
 - Sex & Relationship Education
 - Personal and Intimate Care
 - Health and Safety
 - Attendance
 - Risk Assessments (e.g. school trips, use of technology)
 - First Aid and Accidents
 - Managing Allegations Against Staff
 - Staff Behaviour Policy (including Acceptable Use of Technology)
 - Safer Recruitment
 - Whistleblowing

5. Key Responsibilities

- The governing body have read and will follow KCSIE 2019.
- The school has a nominated governor for safeguarding. The nominated governor will take the lead role in ensuring that the school has an effective policy which interlinks with other related policies; that locally agreed procedures are in place and being followed; and that the policies are reviewed at least annually and when required.
- The Governing Body, Headteacher and Leadership Team will ensure that the DSL is properly supported in their role.

5.1 Designated Safeguarding Lead (DSL)

- The school has appointed the Headteacher as the Designated Safeguarding Lead (DSL). The DSL has the overall responsibility for the day to day oversight of safeguarding and child protection systems in school.
- The DSL will undergo appropriate and specific training to provide them with the knowledge and skills required to carry out their role. The DSL and any deputy DSL's training will be updated formally every two years but their knowledge and skills will be updated through a variety of methods at regular intervals and at least annually.
- Deputy DSLs are trained to the same standard as the DSL. Whilst the activities of the DSL may be delegated to the deputies, the ultimate lead responsibility for safeguarding and child protection remains with the DSL and this responsibility will not be delegated.
- **It is the role of the DSL to:**
 - Act as the central contact point for all staff to discuss any safeguarding concerns
 - Maintain a confidential recording system for safeguarding and child protection concerns
 - Coordinate safeguarding action for individual children

- In the case of Children Looked After the DSL should have the details of the child's social worker and the name of the virtual school head in the authority that looks after the child (with the DSL liaising closely with the designated teacher)
- Liaise with other agencies and professionals in line with WTSC 2018
- Ensure that locally established referral procedures are followed as necessary
- Represent, or ensure the school is appropriately represented at multi-agency safeguarding meetings (including Child Protection conferences)
- Manage and monitor the school's role in any multi-agency plan for a child.
- Be available during term time (during school hours) for staff in the school to discuss any safeguarding concerns
- Ensure all staff access appropriate safeguarding training and relevant updates in line with the recommendations within KCSIE (2019)

5.2 Members of Staff

- **All members of staff have a responsibility to:**
- To provide a safe environment in which children can learn.
- Be prepared to identify children who may benefit from early help.
- Consider wider environmental factors in a child's life that may be a threat to their safety and/or welfare.
- To understand the early help process and their role in it.
- To understand your schools safeguarding policies and systems.
- To undertake regular and appropriate training which is regularly updated.
- Be aware of the process of making referrals to children's social care and statutory assessment under the Children Act 1989.
- Know what to do if a child tells them that he or she is being abused or neglected.
- Know how to maintain an appropriate level of confidentiality.
- Be aware of the indicators of abuse and neglect so that they are able to identify cases of children who may be in need of help or protection.

5.3 Children and Young People

- **Children and young people (pupils) have a right to:**
 - Contribute to the development of school safeguarding policies
 - Receive help from a trusted adult.
 - Learn how to keep themselves safe by recognising when they are themselves at risk and how to get help when they need it, including online.

5.4 Parents and Carers

- **Parents/carers have a responsibility to:**
 - Understand and adhere the relevant school/policies and procedures.
 - Talk to their children about safeguarding issues with their children & support the school in their safeguarding approaches.
 - Identify behaviours which could indicate that their child is at risk of harm including online and seek help and support from the school, or other agencies.

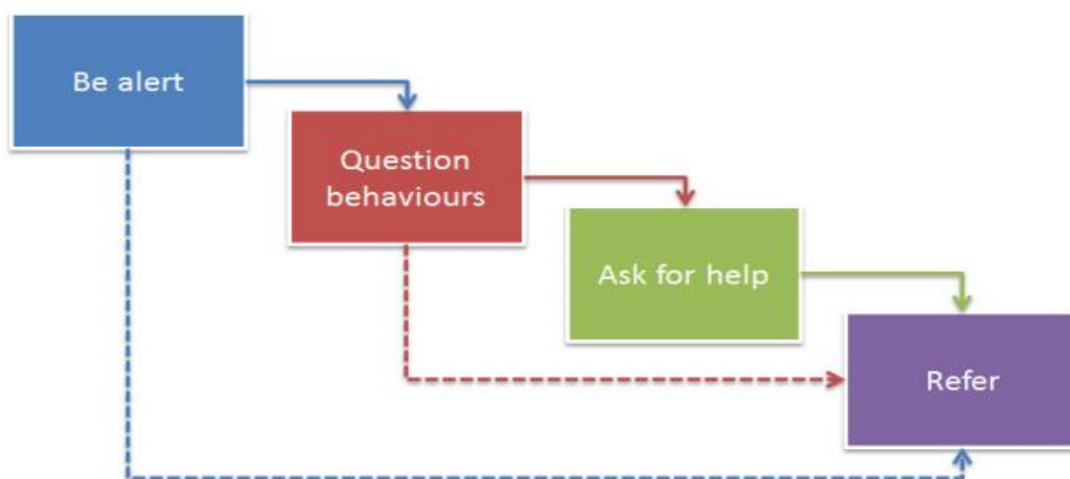
Parents can obtain a copy of the school Child Protection Policy and other related policies on request and can view them via the school website www.brabourne.kent.sch.uk.

6. Recognition and Types of Abuse and Neglect

- All staff in school should be aware of the definitions and indicators of abuse and neglect. There are four categories of abuse:
 - Physical abuse
 - Sexual abuse
 - Emotional abuse
 - Neglect
- Members of staff are aware that child welfare concerns may arise in many different contexts and can vary greatly in terms of their nature and seriousness.
- The warning signs and symptoms of child abuse and neglect can vary from child to child. Children also develop and mature at different rates, so what appears to be worrying behaviour for a younger child might be normal for an older child.
- Parental behaviors' may also indicate child abuse or neglect, so staff should also be alert to parent-child interactions or concerning parental behaviours; this could include parents who are under the influence of drugs or alcohol or if there is a sudden change in their mental health.
- By understanding the warning signs, we can respond to problems as early as possible and provide the right support and services for the child and their family. It is important to recognise that a warning sign doesn't automatically mean a child is being abused.

7. Safeguarding and Child Protection Procedures

- Brabourne CEP School adheres to the KSCB Safeguarding Children Procedures. The full KSCB procedures and additional guidance relating to specific safeguarding issues can be found on the KSCMP website www.kscmp.org.uk
- All members of staff are expected to be aware of and follow this approach:



- It may not always be appropriate to go through all four stages sequentially and if a child is in immediate danger or is at risk of harm, a request for support should be made immediately to Children's Social Work Services and/or the police.

- **The role of the school in situations where there are child protection concerns is NOT to investigate but to recognise and refer.**
- The DSL may seek advice or guidance from Area Education Safeguarding Advisor from the Education Safeguarding Service before making a decision regarding next steps. They may also seek advice or guidance from a social worker at the Front Door service.
- All members of staff are made aware of the internal and local early help support services. Where a child is being offered or receiving early help support, staff will be supported to understand their role in any early help assessment or intervention. This includes identifying emerging problems, liaising with other professionals, and in some cases acting as the lead practitioner.
- The DSL will keep all early help cases under constant review and consideration will be given to a request for support to the Front Door if the situation does not appear to be improving or is getting worse.
- All staff are aware of the process for making request for support referrals for statutory assessments under the Children Act 1989, along with the role they might be expected to play in such assessments.
- **In all but the most exceptional circumstances, parents /carers will be made aware of the concerns for their child at the earliest possible stage.** In the event of a request for support to the Front Door being necessary, parents/carers will be informed and consent to this will be sought in line with guidance provided by KSCB, unless there is a valid reason not to do so, for example if to do so would put a child at risk of harm to would undermine a criminal investigation.
- In the absence of the availability of the DSL to discuss an immediate and urgent concern, staff can seek advice from the Deputy DSL. They may also seek advice from the Education Safeguarding Service or via consultation from a Local Authority social worker at the Front Door. If anyone other than the DSL makes a referral to external services, then they will inform the DSL as soon as possible.
- On occasion, staff may pass information about a child to the DSL but remain anxious about action subsequently taken. Staff should feel able to check the progress of a case with the DSL so that they can reassure themselves the child is safe and their welfare is being considered. If following this process, the staff member remains concerned it is the responsibility of that staff member to follow the school's escalation process.
- If a child's situation does not appear to be improving, then the DSL (or the person that made the request for support) will consider re-referral. Professional disagreements (escalation) will be responded to in line with the KSCB procedures and DSLs may request support via the Education Safeguarding Service.

8. Record Keeping

- Staff will record any welfare concern that they have about a child on the school's safeguarding incident/concern form (with a body map if injuries have been observed) and pass them without delay to the DSL. Records will be completed as soon as possible

after the incident/event, using the child's words and will be signed and dated by the member of staff.

- All safeguarding concerns, discussions and decisions (and justifications for those decisions) will be recorded in writing. If members of staff are in any doubt about recording requirements, they should discuss their concerns with DSL.
- Incident/Welfare concern forms are kept in the Headteacher's Office.
- Safeguarding records are kept for individual children and are maintained separately from all other records relating to the child in the school. Safeguarding records are kept in accordance with data protection legislation and are retained centrally and securely by the DSL. Safeguarding records are shared with staff on a 'need to know' basis only.
- All safeguarding records will be transferred in accordance with data protection legislation to the child's subsequent school/setting, under confidential and separate cover. These will be given to the new DSL and a receipt of delivery will be obtained.
- Detailed guidance on Record Keeping is found in a separate document "Guidelines for Safeguarding Record Keeping in Schools".
- The Headteacher will be kept informed of any significant issues by the DSL.

9. Multi-agency Working

- Brabourne CEP School recognises and is committed to its responsibility to work with other professionals and agencies in line with statutory guidance (WTSC 2018)

Schools are not the investigating agency when there are child protection concerns. We will however contribute to the investigation and assessment processes as required. Brabourne CEP School recognises the importance of multi-agency working and will support attendance at relevant safeguarding meetings, including Child Protection Conferences, Core Groups, Strategy Meetings, Child in Need meetings or other early help multi-agency meetings.

- The School Leadership Team and DSL will work to establish strong and co-operative relationships with relevant professionals in other agencies.

10. Confidentiality and Information Sharing

- Brabourne CEP School recognises that all matters relating to child protection are confidential. The Headteacher or DSL will only disclose information about a pupil to other members of staff on a 'need to know' basis.
- All members of staff must be aware that whilst they have duties to keep any information confidential, they also have a professional responsibility to share information with other agencies to safeguard children.
- All staff must be aware that they cannot promise a child to keep secrets which might compromise the child's safety or wellbeing.
- DfE Guidance on Information Sharing (July 2018) provides further detail. This is kept in the school Office.

11. Complaints

- The school has a **Complaints Procedure** available to parents, pupils and members of staff and visitors who wish to report concerns. This can be found **on the school website**.
- All reported concerns will be taken seriously and considered within the relevant and appropriate process. Anything that constitutes an allegation against a member of staff or volunteer will be dealt with under the specific **Procedures for Managing Allegations against Staff policy**. This can be found on the school shared area.

12. Staff Induction, Awareness and Training

- All members of staff have been provided with a copy of Part One of “*Keeping Children Safe in Education*” (2018) which covers Safeguarding information for all staff. School leaders will read the entire document. School leaders and all members of staff who work directly with children will access Annex A within Keeping Children Safe in Education 2018. Members of staff have signed to confirm that they have read and understood Part One and Annex A. **This is kept in the single central record.**
- The DSL will ensure that all new staff and volunteers (including temporary staff) are aware of the school’s internal safeguarding processes.
- All staff members (including temporary staff) will receive training to ensure they are aware of a range of safeguarding issues.
- All staff members (including temporary staff) will receive regular safeguarding and child protection updates, at least annually.
- All staff members (including temporary staff) will be made aware of the schools expectations regarding safe and professional practice via the staff behaviour policy (or code of conduct) and Acceptable Use Policy.
- The DSL and Head Teacher will provide an annual report to the Governing Body detailing safeguarding training undertaken by all staff and will maintain up to date register of who has been trained.
- Although the school has a nominated lead for the governing body, Sarah Hopker. All members of the governing body will access appropriate safeguarding training which covers their specific strategic responsibilities on a regular basis.

13. Safe Working Practice

- All members of staff are required to work within clear guidelines on Safe Working Practice / the school’s Code of Conduct.
- Staff should be aware of the school’s **Behaviour Management and Physical Intervention Policies**, and any physical interventions must be in line with agreed policy and procedures.

- Staff should be particularly aware of the professional risks associated with the use of social media and electronic communication (email, mobile phones, texting, social network sites etc.) and should adhere to the school's online safety and Acceptable Use policies.

14. Staff Supervision and Support

- Any member of staff affected by issues arising from concerns for children's welfare or safety can seek support from the DSL.
- The induction process will include familiarisation with child protection responsibilities and procedures to be followed if members of staff have any concerns about a child's safety or welfare.
- The school will provide appropriate supervision and support for all members of staff to ensure that:
 - All staff are competent to carry out their responsibilities for safeguarding and promoting the welfare of children
 - All staff will be supported by the DSL in their safeguarding role.
 - All members of staff have regular reviews of their own practice to ensure they improve over time.

The DSL will also put staff in touch with outside agencies for professional support if they so wish. Staff can also approach organisations such as their Union, the Education Support Partnership or other similar organisations directly.

- The school will ensure that members of staff who are working within the foundation stage are provided with appropriate supervision in accordance with the statutory requirements of Early Years Foundation Stage (EYFS) 2017.

15. Safer Recruitment

- Brabourne CEP School is committed to ensure that develop a safe culture and that all steps are taken to recruit staff and volunteers who are safe to work with our pupils and staff.
- The Governing Body and Leadership Team are responsible for ensuring that the school follows safe recruitment processes outlined within guidance.

Brabourne CEP School is responsible for ensuring that the school maintains an accurate Single Central Record (SCR) in line with statutory guidance.

- The Governing Body will ensure that there is at least one of the persons who conducts an interview has completed safer recruitment training.
- We are also committed to supporting the statutory guidance from the Department for Education on the application of the Childcare (Disqualification) Regulations 2009 and related obligations under the Childcare Act 2006 in schools.

- We advise all staff to disclose any reason that may affect their suitability to work with children including convictions, cautions, court orders, cautions, reprimands and warnings.

16. Allegations Against Members of Staff and Volunteers

- Brabourne CEP School recognises that it is possible for staff and volunteers to behave in a way that might cause harm to children and takes seriously any allegation received. Such allegations should be referred immediately to the Head Teacher or deputy in their absence who will first contact the Local Authority Designated Officer (LADO) to agree further action to be taken in respect of the child and staff member. In the event of allegations of abuse being made against the headteacher then staff are advised that allegations should be reported to the Chair of Governors who will contact the LADO in the first instance.
- All staff and volunteers should feel able to raise concerns about poor or unsafe practice and such concerns will always be taken seriously by the senior leadership team.
- All members of staff are made aware of the school's Whistleblowing procedure and that it is a disciplinary offence not to report concerns about the conduct of a colleague that could place a child at risk. Staff can also access the NSPCC whistleblowing helpline if they do not feel able to raise concerns regarding child protection failures internally. Staff can call: 0800 028 0285 (8:00 AM to 8:00 PM Monday to Friday) or email: help@nspcc.org.uk
- Brabourne CEP School has a legal duty to refer to the Disclosure and Barring Service (DBS) anyone who has harmed, or poses a risk of harm, to a child, or if there is reason to believe the member of staff has committed one of a number of listed offences, and who has been removed from working (paid or unpaid) in regulated activity, or would have been removed had they not left. The DBS will consider whether to bar the person. If these circumstances arise in relation to a member of staff at our school, a referral will be made as soon as possible after the resignation or removal of the individual in accordance with advice from the LADO and/or Schools Personnel Service.

When in doubt – consult

17. Peer on Peer Abuse

- All members of staff at Brabourne CEP School recognise that children are capable of abusing their peers. Peer on peer abuse can take many forms, including (but not limited to) bullying, cyberbullying, gender-based abuse, hazing (initiation type violence), sexually harmful behaviour and violence and 'sexting'. The setting is mindful that some potential issues may be affected by the gender, age, ability and culture of those involved.
- Brabourne CEP School believes that abuse is abuse and it will never be tolerated, dismissed or minimised. Any incidents of peer on peer abuse will be managed in the same way as any other child protection concern in accordance with Kent Safeguarding Children Board procedures.

- The school will respond to cases of “sexting” (or Youth Produced Sexual Imagery) in line with the UKCCIS “[Sexting in Schools and Colleges](#)” guidance and [KSCB guidance](#).
- Further information in relation to the schools approach to “sexting” can be found in the settings online safety policy. (on the school website).
- Brabourne CEP School is aware of and will follow the KSCB procedures (www.kscb.org.uk) for supporting children who are at risk of harm as a result of their own behaviour.

18. Safeguarding Children with Special Educational Needs and Disabilities

- Brabourne CEP School acknowledges that children with special educational needs (SEN) and disabilities can face additional safeguarding challenges as they may have an impaired capacity to resist or avoid abuse.
- Brabourne CEP School will ensure that children with SEN and disabilities, specifically those with communication difficulties will be supported to ensure that their voice is heard and acted upon.
- Members of staff are encouraged to be aware that children with SEN and disabilities can be disproportionally impacted by safeguarding concerns such as bullying. All members of staff will be encouraged to appropriately explore possible indicators of abuse such as behaviour/mood change or injuries and not to assume that they are related to the child’s disability and be aware that children with SEN and disabilities may not always outwardly display indicators of abuse.

19. Gangs, County Lines, Violent Crime and Exploitation

- Brabourne CEP School recognises the impact of gangs, county lines, violent crime and exploitation. It is recognised that the initial response to child victims is important and that staff will take any allegation seriously and work in ways that support children and keep them safe.
- All staff have been trained and recognise the need to be vigilant for the signs that may include, but not exclusively:
 - Unexplained gifts/new possessions – these can indicate children have been approached by/involved with individuals associated with criminal networks/gangs.
 - Increased absence from school.
 - Change in friendships/relationships with others/groups.
 - Significant decline in performance.
 - Signs of self-harm/significant change in wellbeing.
 - Signs of assault/unexplained injuries.

19. Online Safety

- It is recognised by Brabourne CEP School that the use of technology presents challenges and risks to children and adults both inside and outside of school.
- The DSL has overall responsibility for online safeguarding within the school.

- Brabourne CEP School identifies that the issues can be broadly categorised into three areas of risk:
 - **content:** being exposed to illegal, inappropriate or harmful material
 - **contact:** being subjected to harmful online interaction with other users
 - **conduct:** personal online behaviour that increases the likelihood of, or causes, harm.
- The DSL and leadership team have read annex C regarding Online Safety within 'Keeping Children Safe in Education' 2018.
- Brabourne CEP School recognises the specific risks that can be posed by mobile phones and cameras and in accordance with KCSIE 2018 and EYFS 2017 has appropriate policies in place that are shared and understood by all members of the school community. Further information regarding the specific approaches relating to this can be found in the schools **Online Safety Policy, Acceptable Use Policy** which can be found on the shared system.
- Brabourne CEP School will ensure that appropriate filtering and monitoring systems are in place when pupils and staff access school systems and internet provision.
- Brabourne CEP School acknowledges that whilst filtering and monitoring is an important part of schools online safety responsibilities, it is only one part of our approach to online safety. Pupils and adults may have access to systems external to the school control such as mobile phones and other internet enabled devices and technology and where concerns are identified appropriate action will be taken.
- Brabourne CEP School will ensure a comprehensive whole school curriculum response is in place to enable all pupils to learn about and manage online risks effectively and will support parents and the wider school community (including all members of staff) to become aware and alert to the need to keep children safe online.

20. Curriculum and Staying Safe

- We recognise that schools play an essential role in helping children to understand and identify the parameters of what is appropriate child and adult behaviour; what is 'safe'; to recognise when they and others close to them are not safe; and how to seek advice and support when they are concerned.
- Our curriculum provides opportunities for increasing self-awareness, self-esteem, social and emotional understanding, assertiveness and decision making so that students have a range of contacts and strategies to ensure their own protection and that of others. Online safety is integrated into the curriculum.
- Our school systems support children to talk to a range of staff. Children will be listened to and heard and their concerns will be taken seriously and acted upon as appropriate.

21. The Use of School Premises by Other Organisations

- Where services or activities are provided separately by another body using the school premises, the Head Teacher and Governing Body will seek written assurance that the

organisation concerned has appropriate policies and procedures in place with regard to safeguarding children and child protection and that relevant safeguarding checks have been made in respect of staff and volunteers.

- If this assurance is not achieved then an application to use premises will be refused.

22. Security

- All members of staff have a responsibility for maintaining awareness of buildings and grounds security and for reporting concerns that may come to light.
- Appropriate checks will be undertaken in respect of visitors and volunteers coming into school as outlined within guidance. Visitors will be expected to sign in and out via the office visitors log and to display a visitors badge whilst on school site. Any individual who is not known or identifiable should be challenged for clarification and reassurance.
- The school will not accept the behaviour of any individual (parent or other) that threatens school security or leads others (child or adult) to feel unsafe. Such behaviour will be treated as a serious concern and may result in a decision to refuse access for that individual to the school site.

23. Monitoring and Review

- All school staff (including temporary staff and volunteers) will have access to a copy of this policy. The policy will also be available to parents/carers.
- The policy forms part of our school development plan and will be reviewed annually.

24. Local Support

- All members of staff in Brabourne CEP School are made aware of local support available
 - **Contact details for Area Safeguarding Advisor (Education Safeguarding Service)**
 - www.kelsi.org.uk/support-for-children-and-young-people/child-protection-and-safeguarding/safeguarding-contacts
 - **Contact details for Online Safety in the Education Safeguarding Service**
 - Rebecca Avery, Education Safeguarding Advisor (Online Protection):
 - Ashley Assiter, Online Safety Development Officer
 - 03000 415797
 - esafetyofficer@kent.gov.uk (non-urgent issues only)
 - **Contact details for the LADO**
 - Telephone: 03000 410888
 - Email: kentchildrenslado@kent.gov.uk
 - **Childrens Social Work Services**
 - Integrated Front Door: 03000 411111
 - Out of Hours Number: 03000 419191

- **Kent Police**
 - 101 (or 999 if there is an immediate risk of harm)
- **Kent Safeguarding Children Board (KSCB)**
 - kscb@kent.gov.uk
- 03000 421126

25. National Support

Support for staff

- Education Support Partnership: www.educationsupportpartnership.org.uk
- Professional Online Safety Helpline: www.saferinternet.org.uk/helpline

Support for Pupils

- NSPCC: www.nspcc.org.uk
- ChildLine: www.childline.org.uk
- Papyrus: www.papyrus-uk.org
- Young Minds: www.youngminds.org.uk
- The Mix: www.themix.org.uk

Support for adults

- Family Lives: www.familylives.org.uk
- Crime Stoppers: www.crimestoppers-uk.org
- Victim Support: www.victimsupport.org.uk
- Kidscape: www.kidscape.org.uk
- The Samaritans: www.samaritans.org
- Mind: www.mind.org.uk
- NAPAC (National Association for People Abused in Childhood): napac.org.uk
- MOSAC: www.mosac.org.uk
- Action Fraud: www.actionfraud.police.uk

Support for Learning Disabilities

- Respond: www.respond.org.uk
- Mencap: www.mencap.org.uk

Domestic Abuse

- Refuge: www.refuge.org.uk
- Women's Aid: www.womensaid.org.uk
- Men's Advice Line: www.mensadviceline.org.uk
- Mankind: www.mankindcounselling.org.uk
- Domestic Abuse services www.domesticabuseservices.org.uk

Honour based Violence

- Forced Marriage Unit: <https://www.gov.uk/guidance/forced-marriage>

Sexual Abuse and CSE

- Lucy Faithfull Foundation: www.lucyfaithfull.org.uk
- Stop it Now!: www.stopitnow.org.uk

- Parents Protect: www.parentsprotect.co.uk
- CEOP: www.ceop.police.uk
- Marie Collins Foundation: www.mariecollinsfoundation.org.uk
- Internet Watch Foundation (IWF): www.iwf.org.uk

Online Safety

- Childnet International: www.childnet.com
- UK Safer Internet Centre: www.saferinternet.org.uk
- Parents Info: www.parentinfo.org
- Internet Matters: www.internetmatters.org
- Net Aware: www.net-aware.org.uk
- ParentPort: www.parentport.org.uk
- Get safe Online: www.getsafeonline.org

Radicalisation and hate

- Educate against Hate: www.educateagainsthate.com
- Counter Terrorism Internet Referral Unit: www.gov.uk/report-terrorism
- True Vision: www.report-it.org.uk

Child Protection Policy Addendum in response to Covid-19

This addendum will be reviewed following any updates to national and local guidance and procedures and reshared as required.

1. Context

- On 20th March 2020 parents were asked to keep their children at home, wherever possible, as part of the response to coronavirus (COVID-19). Schools and childcare providers were asked to provide care for a limited number of children - children who are vulnerable, and children whose parents are critical to the COVID-19 response and cannot be safely cared for at home.
- The way Brabourne CEP School is currently operating in response to coronavirus is fundamentally different, however, our safeguarding principles in accordance with 'Keeping Children Safe in Education' (KCSIE) 2019, remain the same:
 - the best interests of children will always come first
 - if anyone has a safeguarding concern about any child they should continue to act and act immediately
 - a DSL or deputy DSL is available
 - unsuitable people are not allowed to enter the children's workforce and/or gain access to children
 - children should continue to be protected when they are online
- This addendum of Brabourne CEP School Child Protection policy contains details of any amendments to our existing safeguarding arrangements.

2. Key School Contacts

	Name	Email	Phone Number
Designated Safeguarding Lead (DSL)	Andrew Stapley	headteacher@brabourne.kent.sch.uk	01303813276
Deputy Designated Safeguarding Leads	Colin Taylor	ctaylor@brabourne.kent.sch.uk	01303813276
Headteacher	Andrew Stapley	headteacher@brabourne.kent.sch.uk	01303813276
Chair of Governors	Hester Fenwick	hfenwick@brabourne.kent.sch.uk	01303 814432
Safeguarding Governor	Sarah Hopker	shopker@brabourne.kent.sch.uk	

3. Designated Safeguarding Leads (DSLs)

- **Name of school** Lead Designated Safeguarding Lead is: Andrew Stapley
- **Name of School** Deputy Designated Safeguarding Lead(s) is/are: Colin Taylor
- Ideally a DSL (or deputy) will be present on-site however if this is not possible, a named DSL will be available to be contacted via phone or online video - for example working from home.
 - Should this not be possible then Brabourne CEP School will share a DSL or deputy from a 'super hub' of local schools, who will be available to be contacted via phone or video call.
 - Mrs Jennifer Payne, Headteacher, Smeeth School headteacher@smeeth.kent.sch.uk, Tel: 01303813128.
 - Mr Phil Chantler, Headteacher, Lady Joanna Thornhill Primary, headteacher@ladyj.kent.sch.uk, Tel:01233811781.
 - Mr Chris Green, Headteacher, Brook Primary School, headteacher@brook-ashford.kent.sch.uk. Tel:01233811 614.
- All staff and volunteers on-site will have access to a trained DSL (or deputy) and know on any given day who that person is, and how they can speak to them.
 - Up to date details of the DSL/Deputy DSLs will be visible to staff and children.
- The DSL/Deputy DSL's will continue to engage with social workers, and attend all multi-agency meetings, which can be done remotely.

4. Vulnerable children

- Ensuring that vulnerable children remain protected is a top priority for Brabourne CEP School.
 - Vulnerable children include those who have a social worker and those children and young people up to the age of 25 with education, health and care (EHC) plans. Please see DfE guidance for further information on [vulnerable children](#).
- There is an expectation that children with a social worker will attend a provision, unless in consultation with the child's social worker and family it is agreed this is not in the best interests of the child. Where parents are concerned about the risk of the child contracting COVID19, professionals will talk through these worries with the parent/carer following the advice set out by Public Health England.
- Children with an EHC plan will be risk-assessed in consultation with the Local Authority and parents and a decision will be made about whether they should continue to attend school.

- Brabourne CEP School has the flexibility to offer a place to other learners who may also be considered vulnerable by the school.
- If vulnerable children are not attending school, we will regularly keep in contact with them.
- Brabourne CEP School will continue to work with those professionals involved with children and share relevant information with them such as social workers, early help workers and virtual school heads (VSH). This is especially important during the COVID-19 period.
 - This will include information about attendance and any welfare concerns.
 - If there is a safeguarding concern, this will be shared with the relevant professional as soon as possible.

5. Attendance monitoring

- Local authorities and education settings do not need to complete their usual day-to-day attendance processes to follow up on non-attendance.
- Brabourne CEP School and social workers will agree with families/carers whether children in need should attend and Brabourne CEP School will follow up with family/carers where a child/children are supposed to be attending but do not.
- In all circumstances where a vulnerable child/children does not take up their place, or discontinues, Brabourne CEP School will notify their social worker and follow up with the family/carer.
- Brabourne CEP School will also follow up with families/carers that have arranged a place for their child/children, namely keyworkers or children that are considered vulnerable but not open to any agencies and do not attend.
 - Staff will continue to work with and support children's social workers to help protect vulnerable children.
- Brabourne CEP School will complete both the KCC and government [daily online attendance](#) form to keep a record of children of critical workers and vulnerable children who are attending school/college.

6. Reporting concerns

- All staff will continue to look out for any signs that indicate a child may be at risk, both on and off site, including online.
 - If a member of staff/volunteer has any safeguarding concerns about a child, this will be reported to the DSL as soon as possible.
 - If the concern is urgent, the member of staff/volunteer will speak to a DSL in person or via phone/video call if they are not on site, immediately.
 - In the event a member of staff or volunteer cannot make contact with a DSL, this will not delay them taking immediate action to safeguard a child.
 - Concerns will be recorded using existing Brabourne CEP School safeguarding processes as outlined in our Child Protection Policy.
- Learners are encouraged to report concerns via existing school systems, or to a trusted adult at home.
- Parents/carers are encouraged to report concerns via existing school systems.
- Where staff are concerned about an adult working with learners, they should report the concern to the headteacher.
 - If there are concerns about any member of staff or volunteer, the LADO service will be consulted with.

- Concerns around the headteacher should be directed to the Chair of Governors.

7. Safeguarding training and induction

- DSL training is unlikely to take place whilst there remains a threat of the COVID 19 virus. For the period COVID-19 measures are in place, a DSL (or deputy) who has been trained will continue to be classed as a trained DSL (or deputy) even if they miss their refresher training.
 - Formal DSL refresher training will be undertaken as soon as possible. DSLs will continue to keep their knowledge up to date through other means.
- All existing staff have read KCSIE 2019 Part 1 and accessed safeguarding training.
 - Staff will be made aware if any processes have changed with the sharing of this addendum and the DSL will communicate any changes to local processes directly.
- All new staff and volunteers will have an induction provided via the DSL and will be provided with a copy of the school Child Protection Policy and Covid-19 Addendum.

8. Safer recruitment

- It remains essential that people who are unsuitable are not allowed to enter the children's workforce or gain access to children.
- During Covid-19 if Brabourne CEP School recruits new staff we will continue to follow the relevant safer recruitment practices.
- If volunteers are recruited Brabourne CEP School will continue to follow the guidance in accordance with KCSIE 2019 and. Volunteers who have not had the relevant checks will not be left unsupervised with a child.
- If staff from other settings volunteer or begin working at Brabourne CEP School we will ensure they have a relevant DBS check following DfE guidance at this time. Brabourne CEP School will risk assess staff from other settings, as we would for a volunteer.
- If staff are deployed from another education or children's workforce setting to our school we will take into account the DfE supplementary guidance on safeguarding children during the COVID-19 pandemic and will accept portability as long as the current employer confirms in writing that:
 - the individual has been subject to an enhanced DBS and children's barred list check
 - there are no known concerns about the individual's suitability to work with children
 - there is no ongoing disciplinary investigation relating to that individual
- In response to COVID-19, the Disclosure and Barring Service (DBS) has made changes to its guidance on standard and enhanced DBS ID checking to minimise the need for face-to-face contact.
- Brabourne CEP School will continue to refer to the DBS anyone who has harmed or poses a risk of harm to a child in accordance with KCSIE 2019.
- Brabourne CEP School will continue to consider and make referrals to the Teaching Regulation Agency (TRA) where appropriate. During the period Covid-19 all referrals will be made by emailing Misconduct.teacher@education.gov.uk.
- Brabourne CEP School will continue to update the single central record and will log details of any risk assessment carried out on volunteers and staff on loan from elsewhere.

9. Supporting children in school

- Brabourne CEP School is committed to ensuring the safety and wellbeing of all its learners
- Brabourne CEP School will be a safe space for all children to attend and flourish. A senior member of staff will ensure that there are appropriate staff on site and that staff to learner ratios have been considered to maximise the safety of children.

- Brabourne CEP School will follow the current government guidance in relation to social distancing and all matters relating to public health from the respective websites and outlets.
- Brabourne CEP School will ensure that all children who are either categorised as vulnerable or children of critical workers and are in attendance are appropriately supported.
- Brabourne CEP School will continue to record any support provided to children in relation to safeguarding issues on their respective safeguarding recording system.

Peer on Peer Abuse

- Brabourne CEP School continues to recognise and respond to cases of Peer on Peer abuse by considering each incident on a case by case basis and basing any intervention on usual processes outlined within KCSIE 19.
- Brabourne CEP School recognises that the current circumstances and the changeable nature of current Government guidance may mean that the school may need to adapt elements of the process in some cases to ensure that they are able to respond in line with Government advice when required.
- The DSL will continue to consult as appropriate with multi-agency professionals to ensure that children's safety and wellbeing is not compromised when incidents of peer on peer abuse are brought to their attention.

Online safety

- Brabourne CEP School's expectations with regards online behaviour and education when using school provided devices or internet access on site will continue to be implemented in line with existing policies. Any concerns regarding onsite online behaviour or use will be responded to in line with existing policies.
- Brabourne CEP School will continue to provide a safe online learning environment where learners use school provided devices on site; appropriate filtering and monitoring will continue to be implemented.
 - Learners internet use will be supervised by staff according to their age and ability and learners will be directed to use appropriate online resources and tools.
- Use of staff and learner personal devices, including mobile phones, will be managed in line with our existing E-Safety and Safer Use policies.

10. Supporting children not in school

- Brabourne CEP School will continue to ensure the safety and wellbeing of all children and young people that remain on the school roll
- All DSLs will continue to identify those vulnerable children that would benefit from Early Help as identified in KCSIE 2019, provide pastoral support and consider whether they would benefit from external support also.
- There will be clear plans around how best to communicate with learners who are identified as vulnerable, as well as those about whom DSLs have concerns about who do not receive a statutory service.
 - This could include telephone contact and/or doorstep visits but is at the discretion of the DSL.
- Brabourne CEP School and the DSL will work closely with all relevant agencies and professionals regarding safeguarding a child who is not on site.

- Any plans will be reviewed regularly and if concerns become significant, the DSL will consider any requests for support if considered appropriate.
- Brabourne CEP School recognises that this is a difficult time for children and young people who consider school as a safe place and the current situation may impact on learners', staff and parent/carers mental health.
- The school will utilise its website and social media presence to ensure that safeguarding messages are shared with children and their families. This will include links to appropriate services and resources that are aimed at supporting them throughout this period.

Online safety away from school

- All staff will continue to look out for any signs that indicate a child may be at risk online and will report and respond to concerns in line with the Child Protection Policy addendum.
 - Where necessary, referrals will be made to LADO, children's social care and as required, the police.
- Learners are encouraged to report concerns to a member of staff or a trusted adult at home. Where this is not possible, additional support can be accessed online via:
 - Childline: www.childline.org.uk
 - UK Safer Internet Centre's 'Report Harmful Content': <https://reportharmfulcontent.com>
 - National Crime Agency Child Exploitation and Online Protection Command (NCA-CEOP): www.ceop.police.uk/safety-centre
- Parents/carers are encouraged to ensure children are appropriately supervised online and that appropriate parent controls are implemented.
- All communication with learners and parents/carers will take place using school provided or approved communication channels; for example, school provided email accounts, Teachers to Parents, our website, our social media accounts.
 - Any pre-existing relationships or situations which mean this cannot be complied with will be discussed with the DSL.
- Brabourne CEP School will ensure any use of online learning tools and systems is in line with privacy and data protection/GDPR requirements.
- Staff and learners will engage with remote teaching and learning in line with existing behaviour principles as set out in our Behaviour Policy.
- When delivering remote learning, staff will:
 - Only use online tools that have been evaluated and agreed by leadership.
 - Ensure remote learning activities are planned in accordance with our curriculum policies, taking learner needs and technology access into account.
 - Where possible, pre-record content.
- If remote learning is taking place 'live' using webcams or chat facilities, staff and learners will ensure a professional environment is maintained. This means:
 - Staff will record the length, time, date and attendance of any online lessons/contact held or made.
 - Live sessions will involve at least two members of staff where possible.
 - Sessions will not be delivered in any 1:1 situation, unless pre-approval has been given by the DSL and/or Headteacher and the session is auditable.
 - Staff will record any online lessons so they can be audited or accessed later if required; learners and staff should be made aware that lessons are being recorded.
 - Staff will agree online behaviour expectations with learners at the start of lessons.

- Staff will revisit our acceptable use of technology policy with learners as necessary.
- All participants will wear suitable dress, use professional language, and ensure backgrounds of videos (live or pre-recorded) are neutral and appropriate.
 - Staff and learners should ensure personal information and/or, inappropriate or unsuitable personal items are not visible.
 - Where possible, other household members should not be in the background or shot; if this unavoidable, they should follow appropriate language and behaviour expectations.
 - If Live streaming, staff will mute and/or disable learners' videos and microphones, as required.

11. Additional support and links

- As well as through existing school mechanisms, learners, staff and parents/carers can access age appropriate and practical support and advice via a range of national and local services:
 - Childline: www.childline.org.uk
 - Kent Resilience Hub: <https://kentresiliencehub.org.uk>
 - NSPCC: <https://learning.nspcc.org.uk/safeguarding-child-protection/how-to-have-difficult-conversations-with-children/>

DfE Guidance

- Closure of educational settings: information for parents and carers: www.gov.uk/government/publications/closure-of-educational-settings-information-for-parents-and-carers/closure-of-educational-settings-information-for-parents-and-carers
- Vulnerable Children Guidance: www.gov.uk/government/publications/coronavirus-covid-19-guidance-on-vulnerable-children-and-young-people/coronavirus-covid-19-guidance-on-vulnerable-children-and-young-people
- COVID-19: guidance for educational settings: www.gov.uk/government/publications/guidance-to-educational-settings-about-covid-19
- Coronavirus (COVID-19): safeguarding in schools, colleges and other providers: www.gov.uk/government/publications/covid-19-safeguarding-in-schools-colleges-and-other-providers
- Coronavirus (COVID-19): attendance recording for educational settings: www.gov.uk/government/publications/coronavirus-covid-19-attendance-recording-for-educational-settings

Specific Links relating to Coronavirus for Learners and Parents/Carers

- Kent County Council: www.kent.gov.uk/social-care-and-health/health/coronavirus
- Childline: www.childline.org.uk/info-advice/your-feelings/anxiety-stress-panic/worries-about-the-world/coronavirus/
- Mind: www.mind.org.uk/information-support/coronavirus/coronavirus-and-your-wellbeing/
- Young Minds: <https://youngminds.org.uk/blog/talking-to-your-child-about-coronavirus/>
- Kent Children's University: Home Resources Learning Packs: www.theeducationpeople.org/blog/kent-childrens-university-home-learning-resources-pack-is-live/
- Children's Commissioner:
 - Children's guide to coronavirus: www.childrenscommissioner.gov.uk/publication/childrens-guide-to-coronavirus/
 - Resources for parents during coronavirus: www.childrenscommissioner.gov.uk/coronavirus/resources/
- Sport England: www.sportengland.org/stayinworkout

- Place2be:
 - www.place2be.org.uk/about-us/news-and-blogs/2020/march/coronavirus-supporting-children-who-may-be-especially-vulnerable/
 - www.place2be.org.uk/about-us/news-and-blogs/2020/march/coronavirus-information-for-children/

Online Safety

- NCA-CEOP: www.thinkuknow.co.uk/
- Internet Matters: www.internetmatters.org/
- Childnet: www.childnet.com/blog/keeping-children-happy-and-safe-online-during-covid-19
- UK Safer Internet Centre: www.saferinternet.org.uk/blog/working-remotely-advice-professionals-parents-posh-rhc
- NSPCC: www.nspcc.org.uk/keeping-children-safe/online-safety/
- Parent Info: <https://parentinfo.org/>
- BBC Own it: www.bbc.com/ownit

Domestic Abuse (*Amend according to local area*)

- Domestic Abuse Services: www.domesticabuseservices.org
- Victim Support: 0808 16 89 111 www.victimsupport.org.uk/help-and-support/get-help/supportline
- Look Ahead Care & Support – Service provider West Kent (Sevenoaks, Tunbridge Wells, Tonbridge and Malling): www.lookahead.org.uk/
- Oasis Domestic Abuse service – Service provider, East Kent. (Thanet and Dover): www.oasisdasevice.org/home
- Clarion Housing Association – Service provider for North and South Kent
 - North Kent: (Dartford & Gravesham, Swale and Maidstone) Clarion DA confidential Helpline: 07376 637069 (Mon-Fri 9am – 5pm)
 - South Kent: (Ashford, Folkestone & Hythe and Canterbury) Rising Sun Domestic Abuse service helpline: 01227 452852 (Mon-Fri 9am – 5pm)
- National Women's Aid Domestic Abuse 24hr helpline: 0800 2000247